

Customer :

customer

Customer part :

customer part

Comment :

Comment

S1=4.35

S2=5.57

Tmax=470

Tp S2=509.0

PI=0.44

HI=98

Sample =1803.3

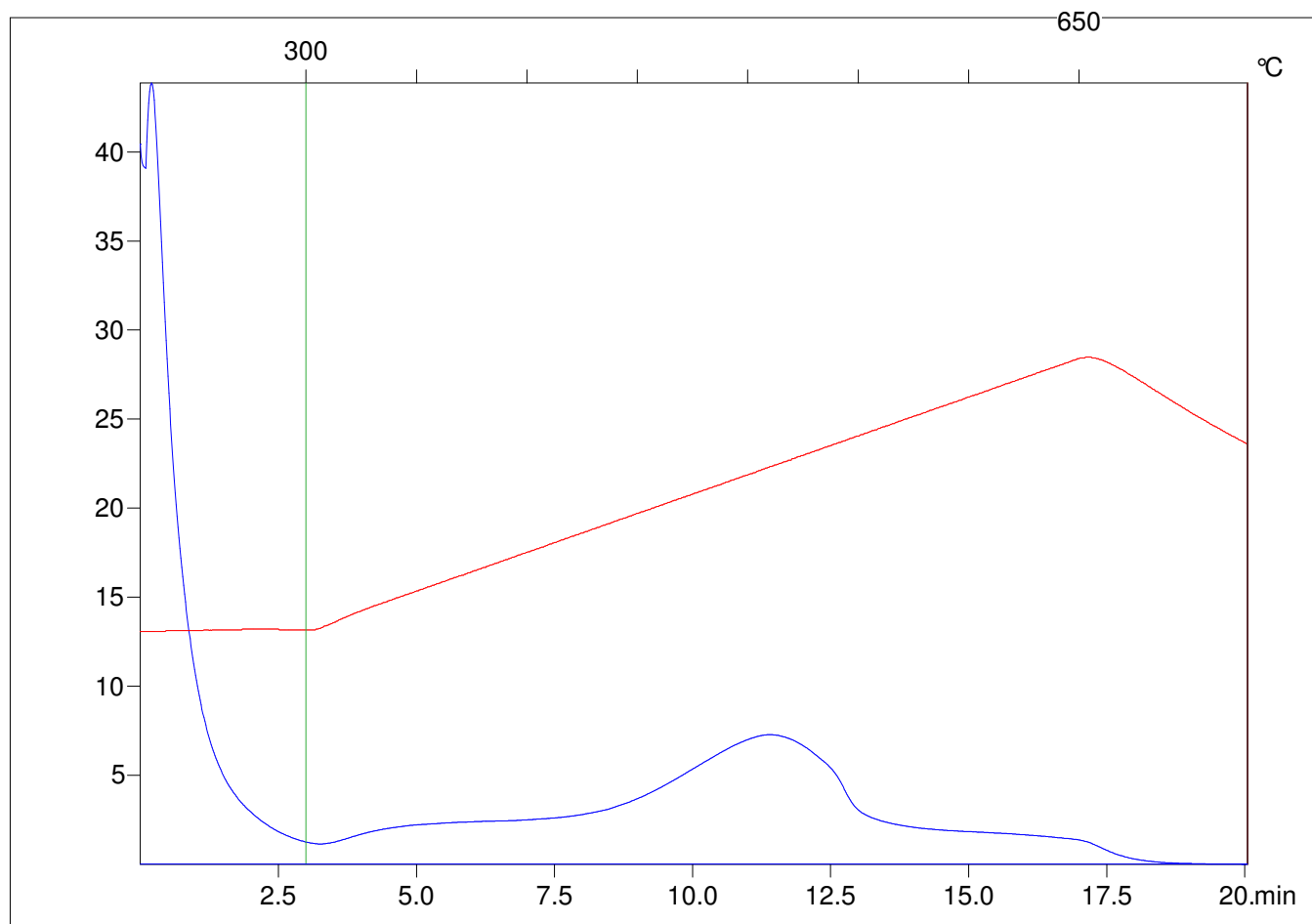
Method =Bulk Rock

Cycle=Basic

KFID(10*9)=1444

Qty =70.4

TOC=5.7



C:\VINC\PK4_1792\PK018.R00 : FID pyrolysis graphic

State

Pyro Status

Oxi Status